



New York, NY II



249 Grand Central Station



549 Empire State



595 The Metropolitan



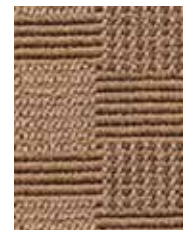
649 Greenwich Village



717 Chelsea



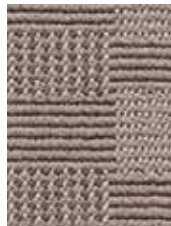
736 Broadway



878 Brooklyn Bridge



898 Radio City



989 Rockefeller

PRODUCT SPECIFICATIONS

STYLE NAME..... New York, NY II
 STYLE NUMBER..... KC176
 COLLECTION..... Archetype
 PRODUCT TYPE..... Broadloom
 CONSTRUCTION..... Woven
 SURFACE APPEARANCE..... Textured Patterned Loop
 NYLON TYPE..... Ultron® Nylon, Type 6,6
 PILE WEIGHT..... 34.0 oz. per sq. yd. (1153 g/m2)
 PILE THICKNESS..... .136" (3.45 mm)
 DYE METHOD..... Skein Dyed
 PROTECTIVE TREATMENT..... Sentry Plus
 DENSITY..... 9,000
 WEIGHT DENSITY..... 306,000
 BACKING MATERIAL..... Woven

SECONDARY BACKING..... None
 PATTERN REPEAT..... 8" (W) x 2.50" (L)
 WIDTH..... 12' (3.66 m)
 FLAMMABILITY..... ASTM E 648 Class 1 (Glue Down)
 SMOKE DENSITY..... ASTM E 662 Less than 450
 STATIC PROPENSITY..... AATCC-134 Under 3.5 KV
 IAQ GREEN LABEL PLUS..... 4952
 PITCH..... 216 (315 ends per meter)
 RPI..... 9.5 (37.40 per 10 cm)
 CRI APPEARANCE RETENTION RATING..... Severe Traffic
 WARRANTIES..... Lifetime Limited Woven Wear Warranty,
 Lifetime Static