

luxury commercial tile

SPECIFICATIONS



FUNCTIONALITY SURPASSED ONLY BY ITS INHERENT BEAUTY.

With a look and feel that matches its natural counterparts, Mohawk Luxury Commercial Tile offers a wide range of features which is surpassed only by their practical and enduring benefits.

Extensive collection of patterns, colors and sizes

- Unique patterns
- Stunning layouts
- Limitless design capabilities

PU Coating

- Reduces scuffing and maintenance costs

0.7 mm Clear TPe Wear Layer

- Ideal for heavy commercial traffic use
- Brings durability and longevity to any project

Easy Maintenance

- Reduced labor costs
- Reduced down time
- Increased access

Safety

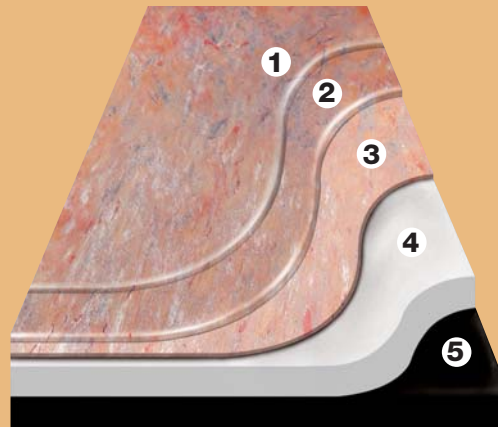
- Meets ASTM – E 84 Class 1
- Increased use in critical areas
- Can be utilized in Public Access areas

20 Year Warranty

- Offers peace of mind
- Warrants that any Mohawk Luxury Tile flooring will not wear out in twenty years
- Assures cost effectiveness over time



- 1. PU Coating layer:**
 - Reduces Scuff Marks
 - Resists staining
 - Minimizes Initial Maintenance
- 2. 0.70 mm Clear TPe wear layer:**
 - Allows access for heavy commercial traffic
 - Resists staining
 - Ease of maintenance
 - Protects the decorative pattern layer
- 3. Decorative 0.07 mm Photogravure layer:**
 - Emulates the look and feel of natural and geometric patterns
 - Carries a pearlescent finish on selected patterns
- 4. Intensifier 1.10 mm layer:**
 - Allows lighter and vivid colors to be used on the photogravure layer
 - Adds dimensional stability
- 5. Base 1.25 mm layer:**
 - Increases Ergonomic comfort
 - Creates dimensional stability
 - Fabric finish base increases adhesion



STONE PREMIUM COLLECTION

Rugged yet beautiful.

The Mohawk Group Stone brings a classic and durable style to any setting.



FOSSIL STONE

Fossil Stone
18" x 18" (457 mm x 457 mm)



K321



K322



K323

FIELDSTONE

Fieldstone
24" x 24" (610 mm x 610 mm)



K441



K442

FLAGSTONE

Flagstone
24" x 24" (610 mm x 610 mm)



K411



K412



K421



K422

WOOD II PREMIUM COLLECTION

Rugged and warm while remaining true to its simple origins.



P272



P282



P271



P261



P281



P283



P284



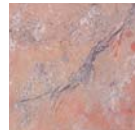
P262

Wood II
36" x 6" (915 mm x 152 mm)

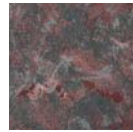
SLATE COLLECTION



Rugged beauty forged from sheer inspiration.



SL005



SL007



SL006



SL001



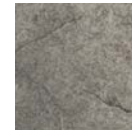
SL002



SL008



SL003



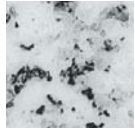
SL004

Slate
18" x 18" (457 mm x 457 mm)

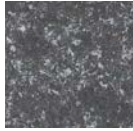
GRANITE COLLECTION



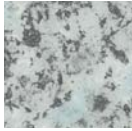
Strength and resiliency from the ground up.



GN001



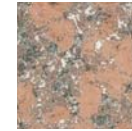
GN005



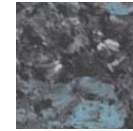
GN007



GN006



GN004



GN002



GN003

Granite
18" x 18" (457 mm x 457 mm)

WOOD COLLECTION



From nature's forests to your imagination.



WP001



WP002



WP003



WP004



WP005



WP006



WP007*



WP801



WP802



WP803



WP804



WP805

PREMIUM



WP601



WP602



WP603



WP604



WP605



WP606

WP000 Series
36" x 4" (915 mm x 101 mm)

WP800 Series
48" x 8" (1219 mm x 202 mm)

WP600 Series (Premium)
36" x 6" (915 mm x 152 mm)

*WP007 - Naturally occurring colorations in this series create lighter and darker tones. Each carton contains a 2:1 (darker to lighter) blend.

METALLIC PREMIUM COLLECTION

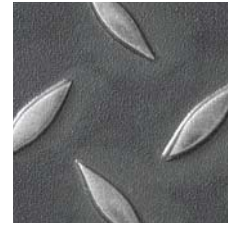
Step to the future without forsaking the past.



MT004



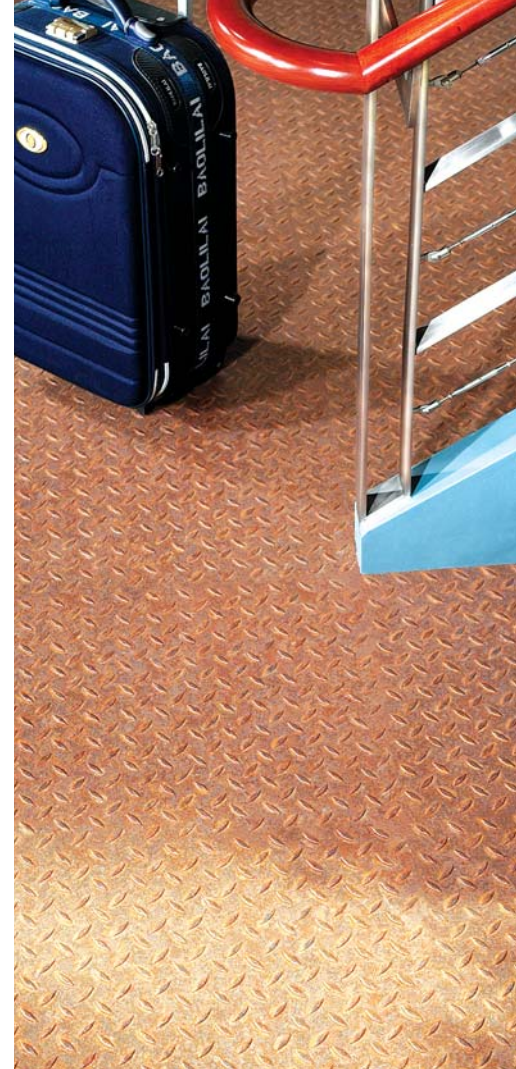
MT002



MT003

Metallic
36" x 18" (915 mm x 457 mm)

MT004 Pattern does not repeat.





MR-F2



MR-F3



MR-F1



MR-F4



MR-E1



MR-E2



MR-E3



MR-E5



MR-E4



MR-E6

MR-F3 / MR-F4 / MR-E5 / MR-E4 / MR-E6
4" x 4" (102 mm x 102 mm)

MR-F2 / MR-F1 / MR-E1 / MR-E2 / MR-E3
36" x 4" (915 mm x 102 mm)

Stunning accents that complement, coordinate, and complete.

With a style and flare that can only be Mohawk Luxury Commercial Tile, comes an ensemble of accessories and accents destined to widen your design parameters even further. With borders and keystones which round out an infinite and exciting flooring collection, these accessories further solidify the role of Mohawk Luxury Commercial Tile as groundbreaking and original in the world of flooring design.



SPECIFICATIONS

Gauge	0.1181" (3.00 mm)		
Sizes	Tile 18" x 18" (457 mm x 457 mm)		
	Tile 18" x 36" (457 mm x 915 mm)		
	Tile 24" x 24" (610 mm x 610 mm)		
	Planks 4" x 36" (101 mm x 915 mm)		
	Planks 6" x 36" (152 mm x 915 mm)		
	Planks 8" x 48" (202 mm x 1219 mm)		
Colors	Slate	8	Metallic 3
	Granite	7	Wood 18
	Stone	9	Wood II 8
ASTM F 1303 - TPe Wear Layer	0.7 mm		
ASTM F 1700 – Dimensional Stability	Class III, Type A or B		
ASTM F 540 - Squareness	0.006		
ASTM D-2240 - Hardness	59		
ASTM E 84 - Fire Resistance (Steiner Tunnel)	Class 1		
ASTM E 662 - Smoke Density	Class 1 <450		
ASTM E 648 / NFPA 253- Fire Resistance	Class 1		
ASTM D- 3389 Abrasion Resistance	0.122 gm loss		
ASTM D-1894 / D-2047 – Static Coefficient of Friction	Passes		
ASTM F 1700 / F 1914 test method Indentation	Initial	21%	
	Residual	4.8%	
ASTM F 970 - Static Load	2500 psi		
ASTM F 925 – Chemical Resistance	Exceeds - List available on request		
Maintenance	Very Low		
Limited Wear Warranty	20 Years		

ARCHITECTURAL SPECIFICATIONS: All Mohawk Luxury Commercial Tiles shall be furnished by The Mohawk Group, 500 TownPark Lane, Suite 400, Kennesaw GA, United States, 30144. Mohawk Luxury Commercial Tiles shall comply with ASTM F 1700 Class III, Type A or B. All Mohawk Luxury Commercial Tiles shall be (specify: Stone, Wood II, Slate, Granite, Metallic, Wood finish) (specify: in 18" x 18" (457 mm x 457 mm), 24" x 24" (610 mm x 610 mm), 18" x 36" (457 mm x 915 mm), 4" x 36" (101 mm x 915 mm), 6" x 36" (152 mm x 915 mm), 8" x 48" (202 mm x 1219 mm) in size and 0.1181" (3.00 mm) in gauge.)

INSTALLATION: Mohawk Luxury Commercial Tiles must be installed in accordance with the manufacturer's specifications, including subfloor preparation and recommended adhesives.

MAINTENANCE: We want your Mohawk Luxury Commercial Tile floor to look and perform the best it can be with the minimum of fuss and effort from you.

The following simple maintenance steps can:

- Reduce maintenance costs
- Substantially shorten maintenance time
- Reduce facility down time, and
- Eliminate the need for expensive cleaners and finishing products

Mohawk Luxury Commercial Tile maintenance program:

- Dry mop or vacuum
- Clean with neutral cleaner

Optional: Spray buff with AB Marathon Spray Buff using a white or beige pad, to a satin or high luster finish.

All Mohawk Luxury Commercial Tiles: Stone, Wood II, Slate, Granite, Metallic and Wood must be installed in accordance with manufacturer's specifications, including preparation and recommended adhesive. Refer to "Mohawk Luxury Commercial Tile Preparation and Installation Procedures" for complete details. Copies can be obtained at www.mohawkgroup.com or by writing: The Mohawk Group, 500 TownPark Lane, Suite 400, Kennesaw GA, 30144.

WARRANTY: Limited 20-year wear warranty on Mohawk Luxury Commercial Tiles against premature wear and manufacturing defects. Details can be obtained at www.mohawkgroup.com or by writing: The Mohawk Group, 500 TownPark Lane, Suite 400, Kennesaw GA, 30144.

The Mohawk Group

500 TownPark Lane, Suite 400 • Kennesaw, GA 30144 • tel 800.554.6637
mohawkgroup.com

KARASTAN
CONTRACT

Durkan
COMMERCIAL

MOHAWK
COMMERCIAL

BIGELOW
COMMERCIAL

DURKAN
PATTERNED CARPET

