

Mohawk

Mohawk

MEDI-FLEX - SHEET RUBBER  
MEDI-FLEX II - TILE & SHEET RUBBER



Mohawk Hard Surfaces



Mohawk Hard Surfaces



- Unlimited design potential
- Superior sound absorption
- Ecologically responsible

- Ease of installation
- Maximum comfort & durability
- Smoke & flame resistance

# medi-flex

Resilient, safe and stylish, Medi-Flex distinguishes itself through its countless functional and aesthetic attributes. Perfect for various commercial applications from educational: class rooms, corridors, shower rooms, libraries, to healthcare facilities: hospitals, long term care facilities, doctors offices, cafeterias. Medi-Flex is not only durable, but slip resistant, easy to maintain, and comes in a wide range of colors.



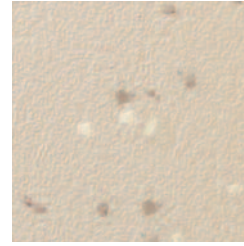
RRO-514  
Desert Daystar



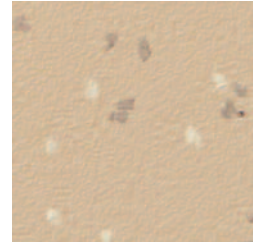
RRO-504  
Tawny Pearl



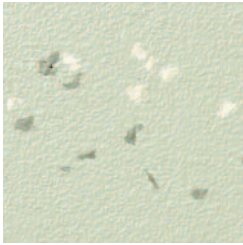
RRO-508  
Taupe Tease



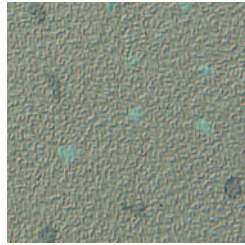
RRO-505  
Orient Espresso



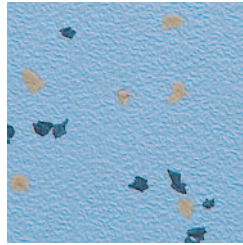
RRO-506  
Antique Paradise



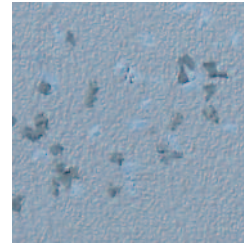
RRO-512  
Silky Sage



RRO-511  
Palm Paradise



RRO-532  
Smoky Branch



RRO-509  
Shady Twilight



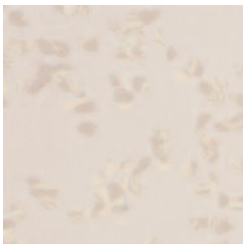
RRO-550  
Gobi Lilac

## features & benefits

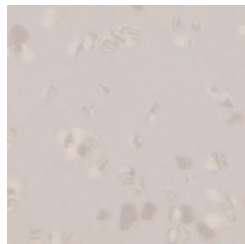
- PVC-FREE with very low VOC emissions
- Outstanding foot comfort in both 2mm and 3mm gauge
- Great slip resistance with a paper textured look
- Low maintenance cost with the NO WAX floor option
- Antibacterial flooring that resists the growth of bacteria, fungus and mold
- Amazing sound absorption of at least 16dB
- Ideal for high traffic areas with a static load of 1,100 PSI
- Fire resistance (ASTM E-648 - Critical Radiant Flux CRF [W/cm<sup>2</sup>]), >0.5
- Smoke Density (ASTM E-662), Class 1 ≤ 450
- No minimum order size
- 10 years Limited Wear Warranty

## medi-flex II

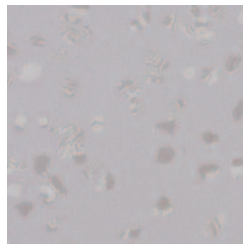
Medi-Flex II is a new generation of rubber flooring, designed to make a pleasing contribution to building environments. Bringing a softer, tonal approach with 18 new, trendy colors, Medi-Flex II is a more accessible rubber flooring suited to a broad range of applications. With a remarkable combination of features, it is ideal for healthcare, commercial and educational projects. Available in both 2mm and 3mm sheet and tiles.



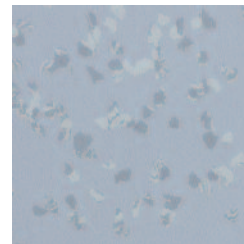
ADV-612  
Cameo White



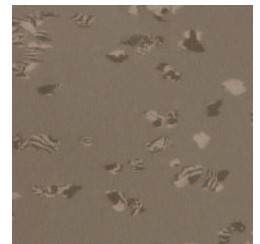
ADV-631  
Platinum



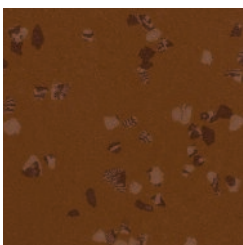
ADV-632  
China Blue



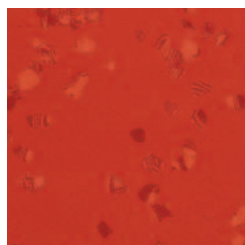
ADV-633  
Arctic Blue



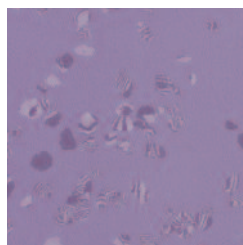
ADV-634  
Beach Bolders



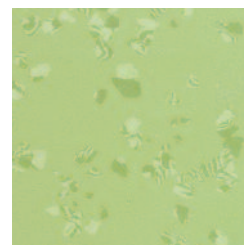
ADV-648  
Dark Chocolate



ADV-651  
Burning Sky



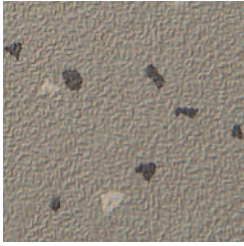
ADV-656  
Bayou Blues



ADV-681  
Spring Leaves



ADV-682  
Limerock



RRO-534  
Castle Marne



RRO-545  
Moroccan Crackle



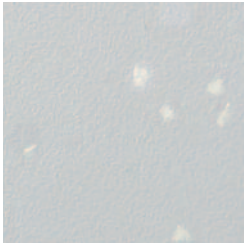
RRO-515  
Soft Sun



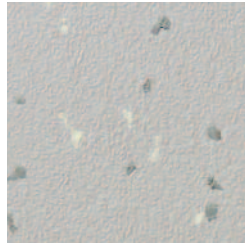
RRO-544  
Burnished Cinnamon



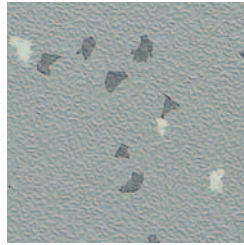
RRO-575  
Oasis Flower



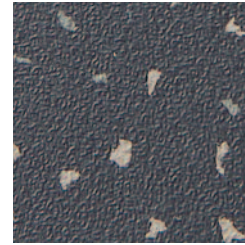
RRO-503  
Northern Light



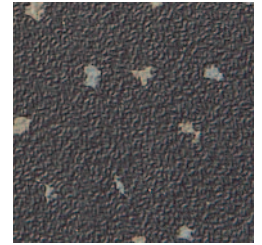
RRO-501  
Cirrus Cloud



RRO-531  
Pewter Fossil



RRO-523  
Shadow Dune



RRO-537  
Warm Sable

Slight texture 2 mm 3 mm

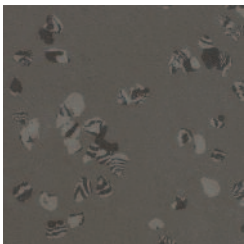
60" nominal x 50' (1.5 m x 15.2 m)



medi-flex



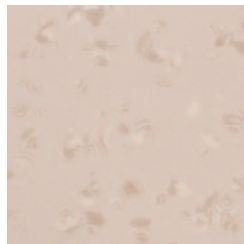
medi-flex II



ADV-635  
Thunderstorm Sky



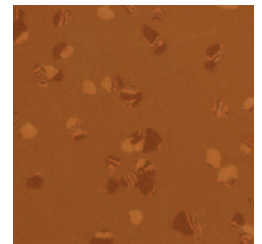
ADV-641  
Desert Storm



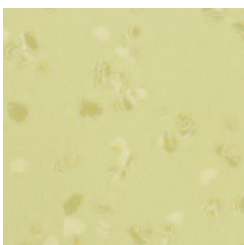
ADV-642  
Stoney Creek



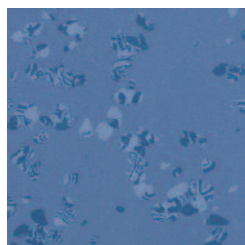
ADV-643  
Nevada Desert



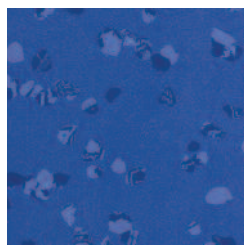
ADV-646  
Bronze Leaf



ADV-683  
Tender Green



ADV-692  
Matinee



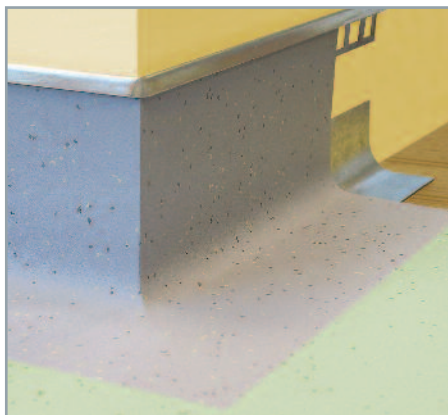
ADV-693  
Caribbean Blue

Slight texture 2 mm 3 mm

Micro-Ground  
18.97" x 18.97" (482 mm x 482 mm)

60" nominal x 50' (1.5 m x 15.2 m)

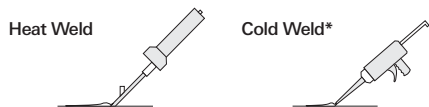
# pro-tech cove



Create a long-lasting, puncture resistant sanitary barrier, impervious to moisture, dirt, bacterial and fungal contamination when heat or cold welded. Medi-Flex and Medi-Flex II flooring is color matched and factory bonded to the aluminum construction in convenient coves to a maximum 12" up / 12" out and 10 foot lengths.

## Heat Weld / Cold Weld

Optional heat welding or cold welding for a seamless, sanitary flooring that's easy to maintain.



\*Cold weld is only available in transparent.



Pro-Tech 10 Year  
Anti-Crack Warranty

# medi-flex heat weld rods

ORDER NO.		MATCHING NO.
RHW-03		RRO-503
RHW-01		RRO-501
RHW-31		RRO-531
RHW-23		RRO-523
RHW-34		RRO-534
RHW-37		RRO-537
RHW-14		RRO-514
RHW-04		RRO-504
RHW-05		RRO-505
RHW-06		RRO-506
RHW-44		RRO-544
RHW-08		RRO-508
RHW-45		RRO-545
RHW-15		RRO-515
RHW-75		RRO-575
RHW-12		RRO-512
RHW-11		RRO-511
RHW-32		RRO-532
RHW-09		RRO-509
RHW-50		RRO-550


# medi-flex II heat weld rods

ORDER NO.		MATCHING NO.
RHW-01		ADV-631
RHW-30		ADV-632
RHW-34		ADV-634
RHW-23		ADV-635
RHW-08		ADV-612
RHW-04		ADV-642
RHW-10		ADV-643
RHW-41		ADV-641
RHW-46		ADV-646
RHW-48		ADV-648
RHW-32		ADV-633
RHW-09		ADV-692
RHW-93		ADV-693
RHW-12		ADV-683
RHW-84		ADV-681
RHW-82		ADV-682
RHW-50		ADV-656
RHW-51		ADV-651
RHW-05		-
RHW-45		-
RHW-06		-
RHW-11		-
RHW-75		-
RHW-15		-
RHW-44		-
RHW-03		-
RHW-31		-
RHW-37		-
RHW-14		-

# specifications

Size <small>*Medi-Flex II only</small>	60" nominal x 50' (1.5 m x 15.2 m) 18.97" x 18.97" (482 mm x 482 mm) Micro-Ground*
Gauge	2 mm and 3 mm
Surface Profile	Slight Texture
Colors	20 (Medi-Flex) 18 (Medi-Flex II)
ASTM D 297 – Density	1.72 g/cc
ASTM D 412 – Elongation – Tensile	170% 1,000 psi
ASTM D 624 – Tear Die	190 lb/in
ASTM D 2047 – Static Coefficient of Friction	Meets ANSI standard for ADA Guidelines
ASTM D 2240 – Hardness (Shore A)	≥ 85
ASTM D 3389 – Abrasion Resistance (H-18 500 g @ 1,000 cycles)	0.5 g
ASTM E 648 – Critical Radiant Flux CRF (W/cm <sup>2</sup> )	> 0.5
ASTM E 662 – Smoke Density	≤ 450
ASTM E 989 – Impact Insulation Class (IIC)	38
ASTM E 492 – Impact Sound Insulation	16 dB
ASTM F 925 – Chemical Resistance	Complies (Available on request)
ASTM F 970 – Static Load (modified)	1,100 psi
ASTM F 1514 – Heat Stability	Better than ΔE = 8.0
ASTM F 1515 – Light Stability	Better than ΔE = 8.0
ASTM F 1859 – Rubber Sheet Floor	Type I
ESD-S7.1 – Electrical Resistance	≥10 <sup>10</sup> ohms
Indoor Air Quality (IAQ): Volatile Organic Compounds (VOC's):	Floor Score Certified by SCS Certification Registration Number SCS-FS-01492
New York City Fire Prevention Code	Accepted under section 27-348
New York State Fire Prevention Code	Complies with Article 15, Part 1120
Adhesives: AD-444 AD-530SF	Regular traffic Heavy rolling loads & under patients' beds
Limited Wear Warranty	10 years

**ANTIBACTERIAL**  
**IMPORTANT:** All Medi-Flex and Medi-Flex II rubber flooring contains naturally occurring inhibitors that resist the growth of bacteria, fungus and mold.

 The Mohawk Group



1975 West Oak Circle  
Marietta, Georgia 30062  
800-554-6637

Samples: 888-740-6936  
www.themohawkgroup.com  
Customer Service: 877-235-0453

Fax: 877-244-8054  
Installation / Maintenance:  
800-833-6954

KARASTAN

LEES

Bigelow

 DURKAN

SLT0003192 / MEDIB