

 DURKAN

Artesia

A COLLECTION BY BRIAN McCLESKEY

Artesia is a transitional mix of static modern shapes that incorporates old style motifs for a contrasting eclectic feel. Inspired by the provincial countryside in the south of France, golden scrolls flowing across this composition represent the movement of clean water as drawn from an artesian well. This unique design establishes a strong statement with its hard edges and high contrasts while utilizing its neutral pallet to achieve a classic yet modern look.



S22054-QSP04
9' (L) X 6' (w) Four Door Rug



S22053-QSP04
8' (L) X 5' (w) Four Door Rug

QSP04 PALETTE

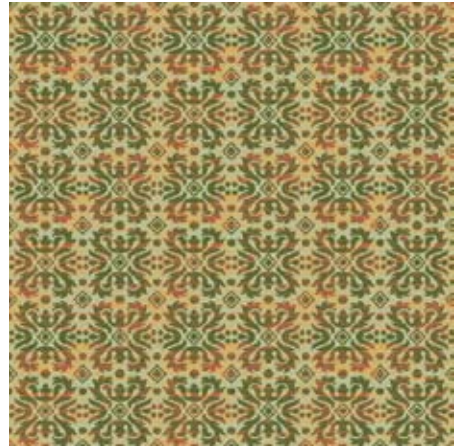


2C1 7T2 7L23 7O2 7KK21 7S5 7H20 4A8 7T23 2B12 2K6

Some patterns in this collection are ideally suited for Synthesis base grades.



S22052-QSP04 60" (L) X 60" (w) Medallion



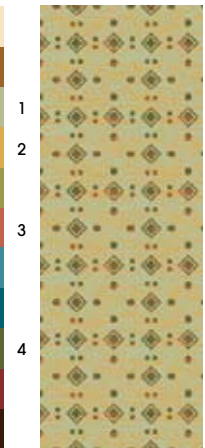
D13206-QSP04 12" (L) X 12" (w) SM



D13208-QSP04 36" (L) X 36" (w) SM



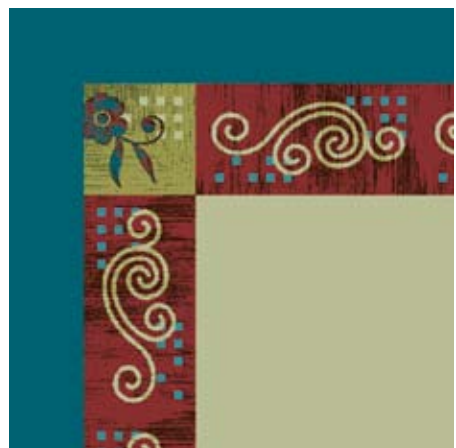
D13204-QSP04 9" (L) X 6" (w) SM



D13205-QSP04 6" (L) X 6" (w) SM



D13207-QSP04 18" (L) X 18" (w) SM



D13209-QSP04 18" (L) X 9" (w) Border/Corner



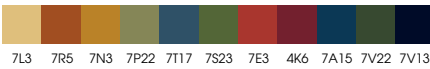
Illustration utilizing S22054 Rug and S22056 Corridor in typical corridor application.



Illustration utilizing S22053 Rug and S22055 Corridor in typical corridor application.



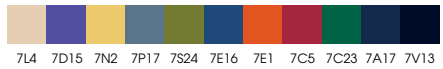
S22053-QSP01 8' (L) X 5' (w) Four Door Rug
QSP01 PALETTE



7L3 7R5 7N3 7P22 7T17 7S23 7E3 4K6 7A15 7V22 7V13



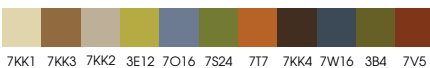
S22053-QSP02 8' (L) X 5' (w) Four Door Rug
QSP02 PALETTE



7L4 7D15 7N2 7P17 7S24 7E16 7E1 7C5 7C23 7A17 7V13



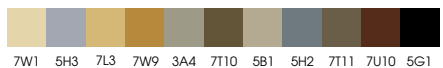
S22053-QSP05 8' (L) X 5' (w) Four Door Rug
QSP05 PALETTE



7KK1 7KK3 7KK2 3E12 7O16 7S24 7I7 7KK4 7W16 3B4 7V5



S22053-QSP06 8' (L) X 5' (w) Four Door Rug
QSP06 PALETTE



7W1 5H3 7L3 7W9 3A4 7T10 5B1 5H2 7T11 7U10 5G1