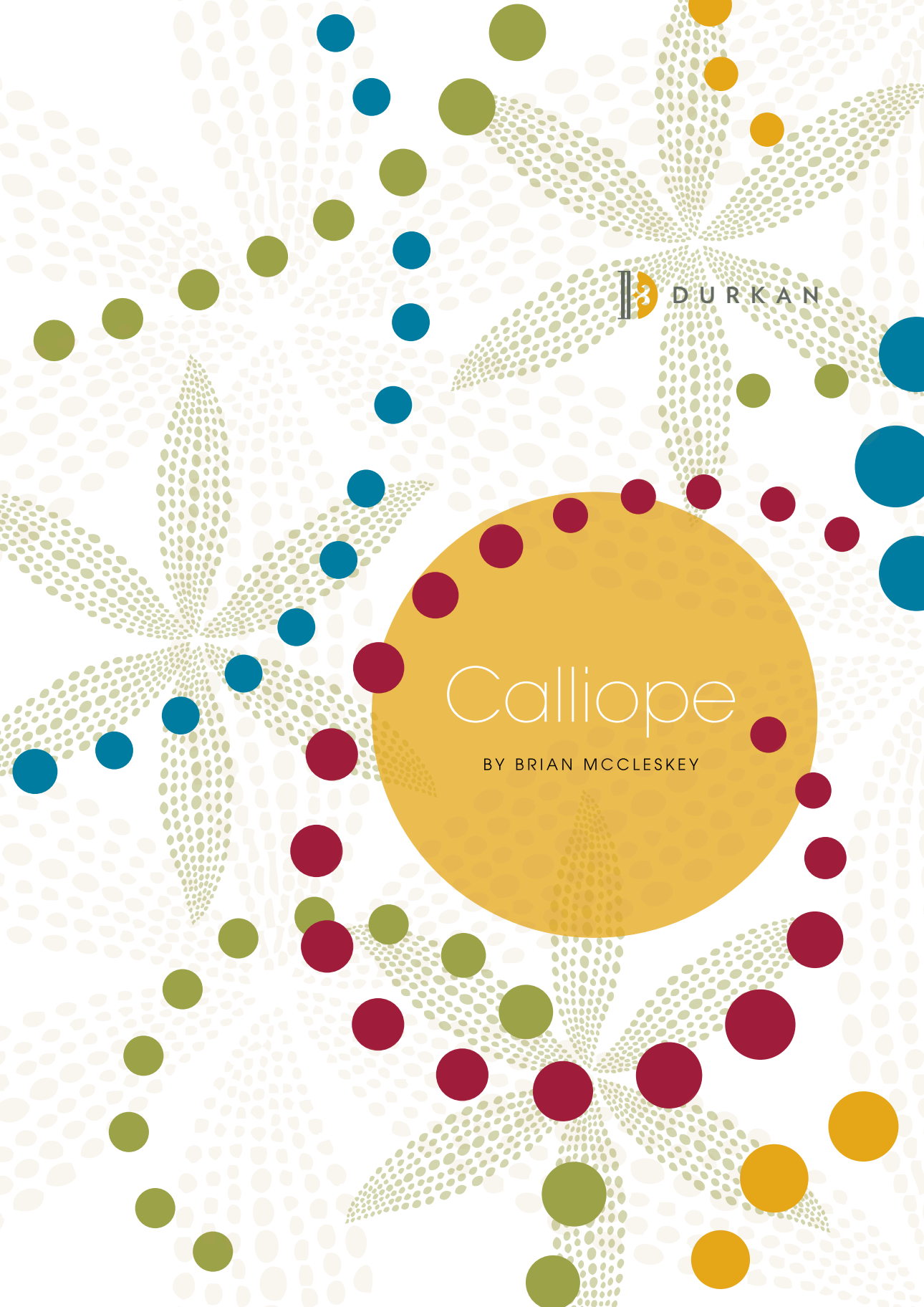


3 DURKAN

Calliope

BY BRIAN MCCLESKEY



Perfect for entertainment venues, Calliope offers designs with a hint of whimsy in a fun, bold color palette. Once popular at carnivals, circuses, and on riverboats, a calliope is a large steam organ played from a keyboard, and is the inspiration for the swirling patterns, starry sequences, and floating musical notes. Calliope will help create an atmosphere of fun and entertainment with a modern take on an original idea.



S22026-MW245*
 9' (L) X 6' (w) Four Door Rug
 *Does not use colors 7Q2, 7N9, 7S24, or 7T6.



S22024-MW245
 8' (L) X 5' (w) Four Door Rug



S22025-MW245
 9' (L) X 6' (w) Four Door Rug

MW245 PALETTE

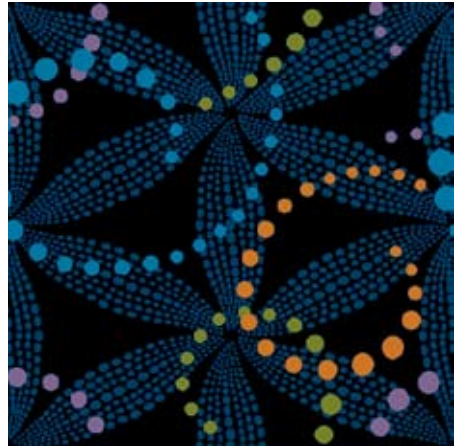


7R24 7Q2 7N9 7S24 7E13 7U1 7E19 7T6 7B18 7D6 7V13

Some patterns in this collection are ideally suited for Synthesis base grades.



S22027-MW245 60" (L) X 60" (w) Medallion



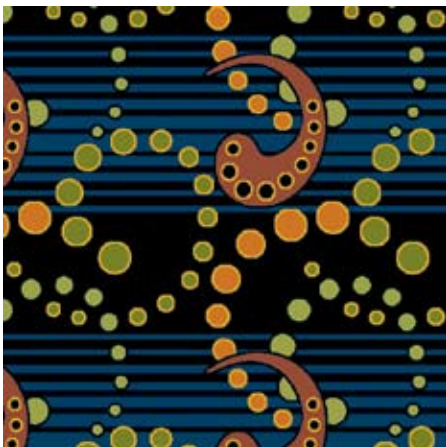
D13167-MW245 36" (L) X 36" (w) SM



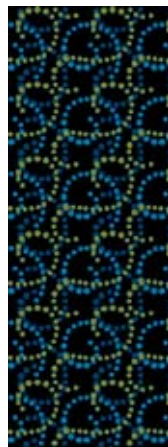
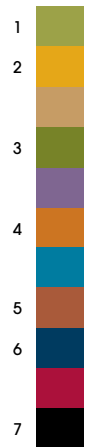
D13166-MW245 36" (L) X 36" (w) SM



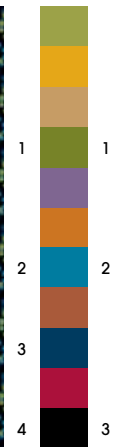
D13164-MW245 12" (L) X 12" (w) HD



D13165-MW245 24" (L) X 24" (w) SM



D13161-MW245 6" (L) X 6" (w) SM



D13162-MW245 6" (L) X 6" (w) SM



1	1
2	2
3	3
4	4
5	5
6	6
7	7
8	8
9	9
10	10
11	11

S22023-MW245

18' (L) X 6' (w) Corridor



S22022-MW245

6' (L) X 4' (w) Corridor

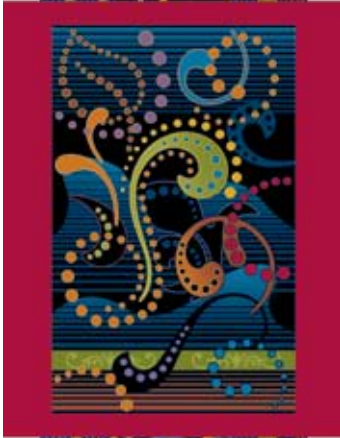


1	Light Green	
2	Yellow	
3	Light Brown	
4	Dark Green	1
5	Purple	2
6	Orange	3
7	Blue	4
8	Brown	
9	Dark Blue	5
10	Red	6
11	Black	7



S22025-MW245
 9' (L) X 6' (w) Four Door Rug
S22022-MW245
 6' (L) X 4' (w) Corridor

S22026-MW245
 9' (L) X 6' (w) Four Door Rug
D13167-MW245
 36" (L) X 36" (w) SM
 Broadloom used in corridor



S22024-MW245
8' (L) X 5' (w) Four Door Rug
S22023-MW245
18' (L) X 6' (w) Corridor

MW245 PALETTE



7R24 7Q2 7N9 7S24 7E13 7U1 7E19 7T6 7B18 7D6 7V13



S22024-QSP06
8' (L) X 5' (w) Four Door Rug
S22023-QSP06
18' (L) X 6' (w) Corridor

QSP06 PALETTE



5H3 5B1 7W1 5H2 5I2 7L3 3A4 7W9 7T11 7U10 5G1