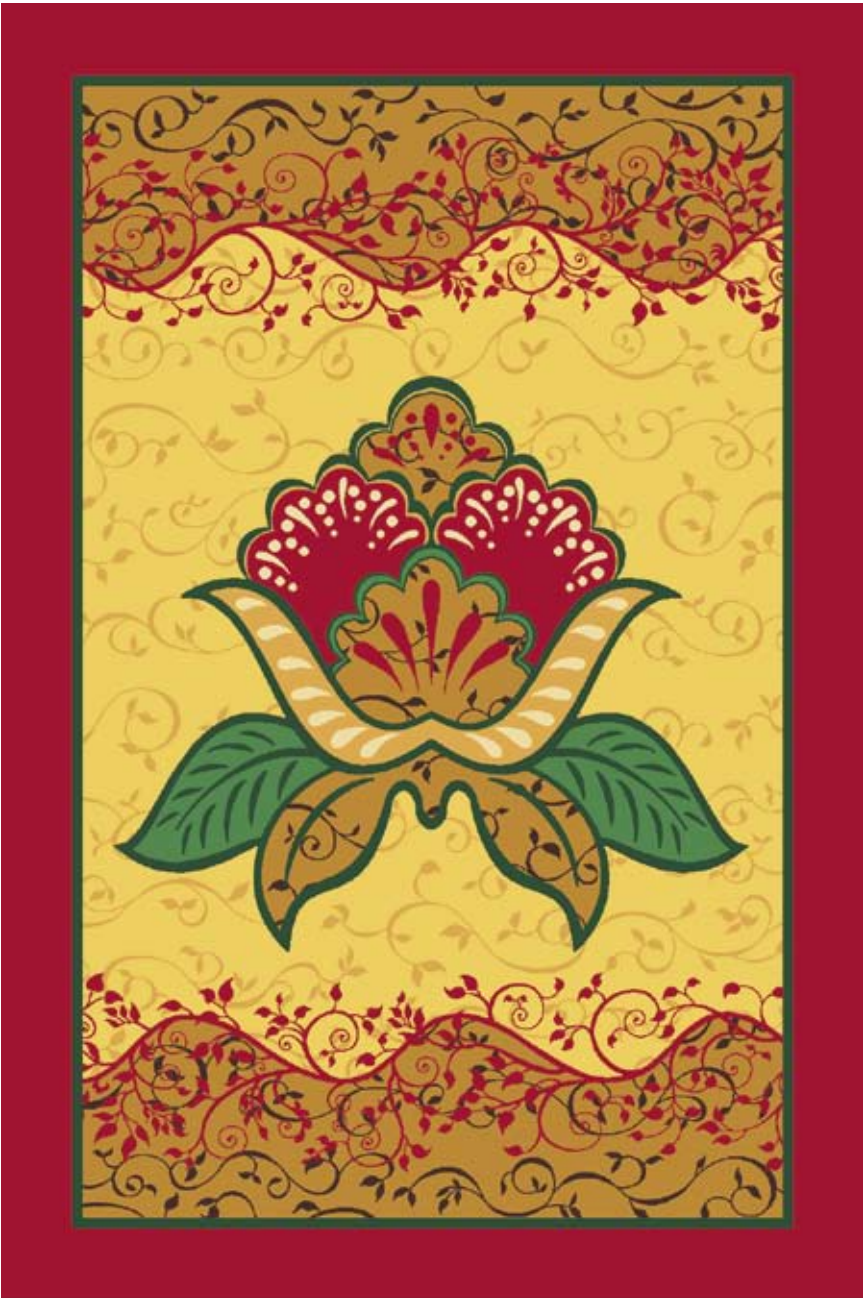




# *Gardenelle*

BY PAUL MOSES





S22351-QSP03\*

\*Does not use color 7D2

8' (L) X 5' (w) Four Door Rug

QSP03 PALETTE



2B1

7M2

7O2

7N3

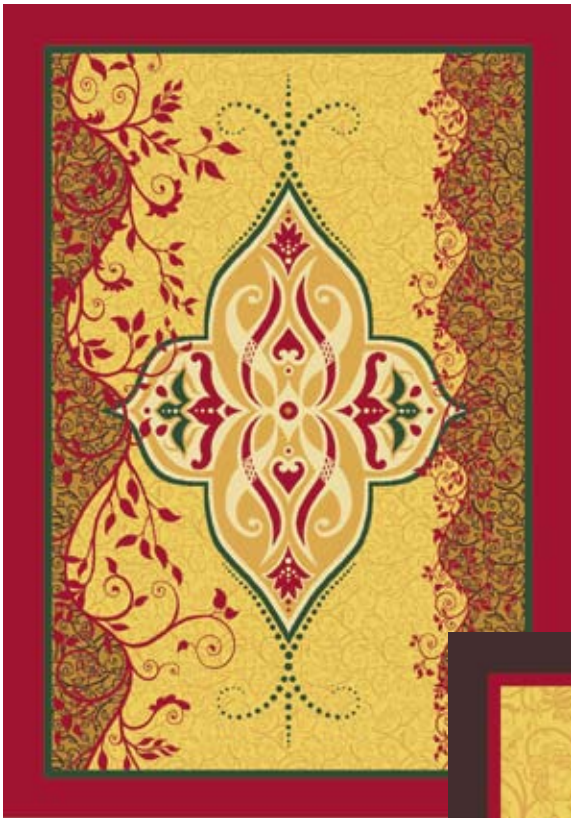
7KK24

7D2

7C3

7U21

2E6



**S22353-QSP03\*** 9' (L) X 6' (w) Four Door Rug  
 \*Does not use colors 7KK24 or 7D2



**S22352-QSP03\*** 9' (L) X 6' (w) Four Door Rug  
 \*Does not use colors 2B1, 7KK24 or 7D2

**QSP03 PALETTE**



2B1

7M2

7O2

7N3

7KK24

7D2

7C3

7U21

2E6



S22354-QSP03 60" (l) X 60" (w) Medallion



D13385-QSP03 36" (l) X 36" (w) HD



S22375-QSP03 72" (l) X 72" (w) HD



D13387-QSP03 36" (l) X 36" (w) SM



D13384-QSP03 18" (l) X 18" (w) HD

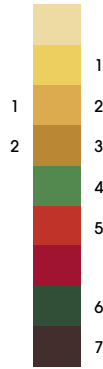


D13383-QSP03 18" (l) X 18" (w) HD



D13382-QSP03

12" (L) X 12" (w) HD



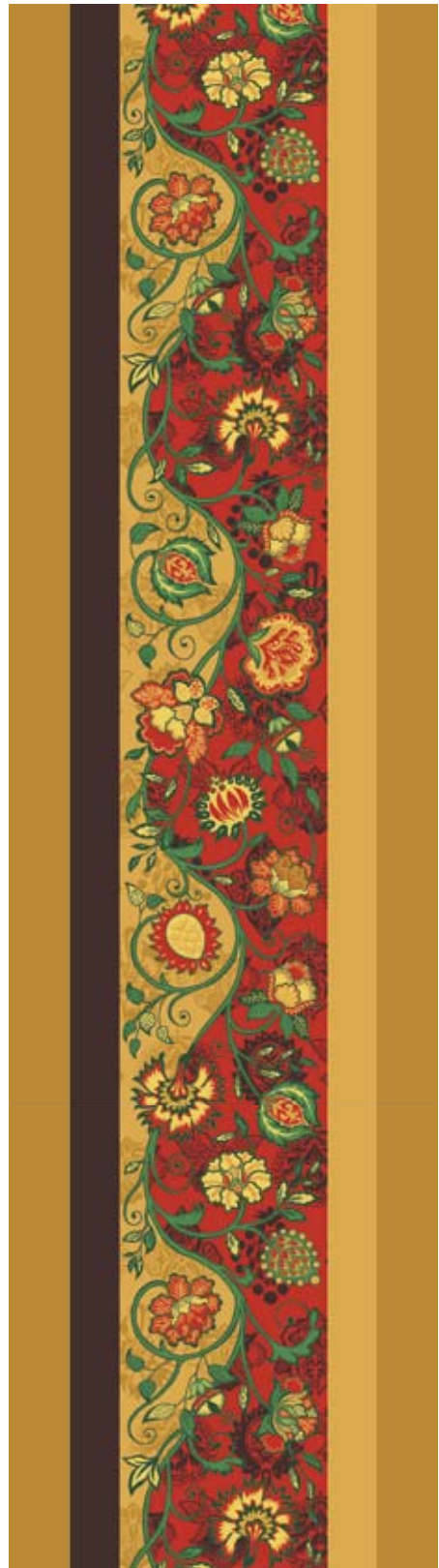
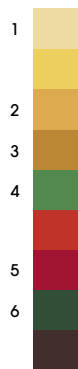
D13381-QSP03

9" (L) X 9" (w) HD



CT13388-QSP03

Carpet Tile



S22348-QSP03

18' (L) X 3' 4 5/8" (w) Corridor



**S22349-QSP03** 18' (L) X 15' (w) Corridor



**S22350-QSP03** 18' (L) X 15' (w) Corridor



**S22353-QSP03**  
**S22349-QSP03**

Four Door Rug  
Corridor



**S22352-QSP03**  
**S22350-QSP03**

Four Door Rug  
Corridor





**D13387-QSP01**

36" (L) X 36" (w) SM

**QSP01 PALETTE**



7L3 7N3 7P22 7R5 7S23 7T17 7A15 4K6 7V13



**D13387-QSP04**

36" (L) X 36" (w) SM

**QSP04 PALETTE**



2C1 7L23 7O2 7KK21 2K6 7H20 4A8 7T23 7T2



**D13387-QSP05**

36" (L) X 36" (w) SM

**QSP05 PALETTE**



7KK1 7S24 3E12 7KK3 7KK4 7O16 7W16 3B4 7KK2



**D13387-QSP06**

36" (L) X 36" (w) SM

**QSP06 PALETTE**



7W1 7L3 3A4 7T11 7W9 7T10 7U10 5I2 5G1

Some patterns in this collection are ideally suited for Synthesis base grades.



DURKAN 405 VIRGIL DRIVE • DALTON, GA 30721 • 800.241.4580 • DURKAN.COM



BENEFITING SUSAN G. KOMEN FOR THE CURE

The Mohawk Group  
GARDE SLT0002819