



Glam
BY JOHN CONDELLO

 DURKAN



"This collection of designs was created using different techniques to add to the effect of motion. My idea was to capture a stream of stylized flowers, flowing and overlapping to bring about a gentle movement. The shapes are styled in a contemporary artistic mode, and give the feel of a field of colors coming together, for a modern but soulful appeal."

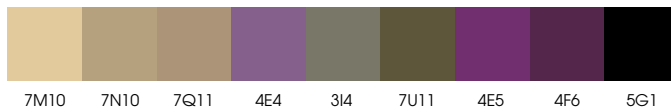


S22189-MW246*
S22188-MW246*

9' (L) X 6' (w) Four Door Rug
8' (L) X 5' (w) Four Door Rug

*This pattern does not use color 7M10.

MW246 PALETTE



Some patterns in this collection are ideally suited for Synthesis base grades.



D13299-MW246

24" (L) X 48" (w) SM



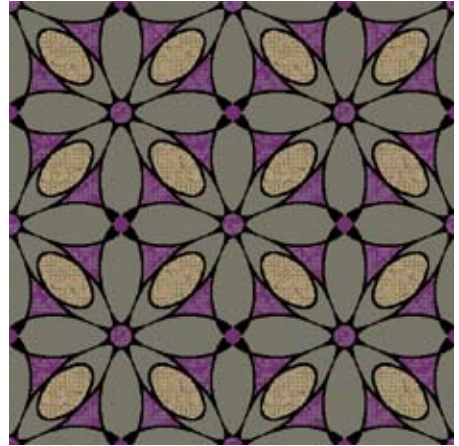
D13298-MW246

36" (L) X 36" (w) SM



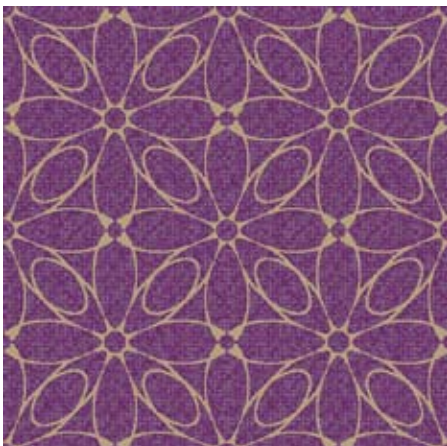
D13297-MW246

36" (L) X 36" (w) SM



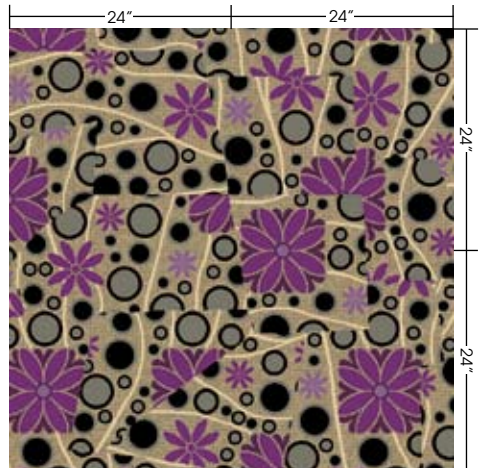
D13295-MW246

18" (L) X 18" (w) SM



D13296-MW246

36" (L) X 18" (w) SM

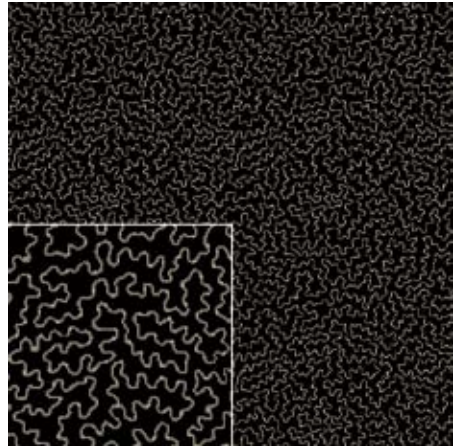


CT13302-MW246

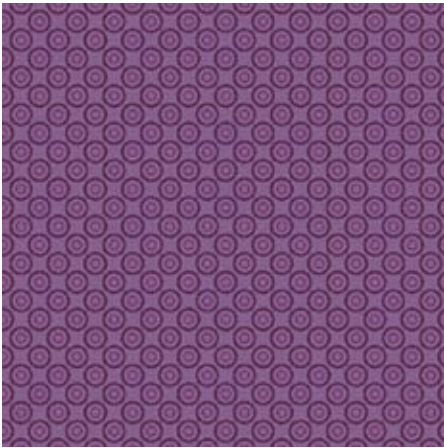
Carpet Tile



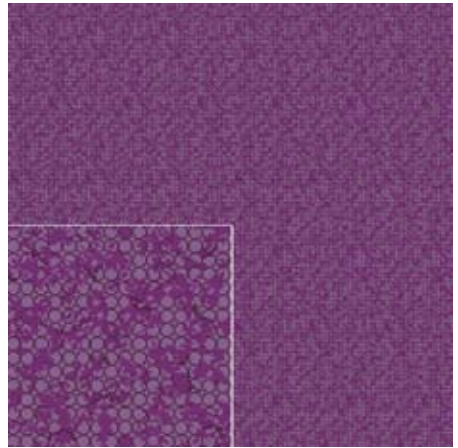
D13294-MW246 18" (L) X 18" (w) SM



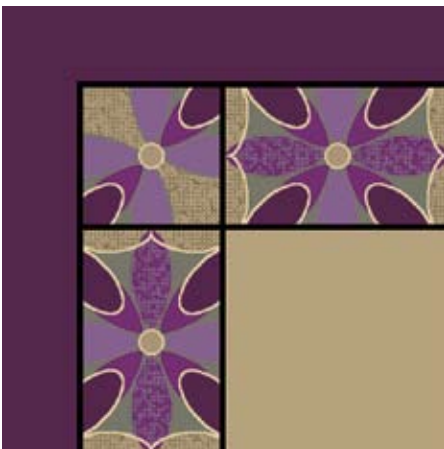
D13293-MW246 18" (L) X 18" (w) SM



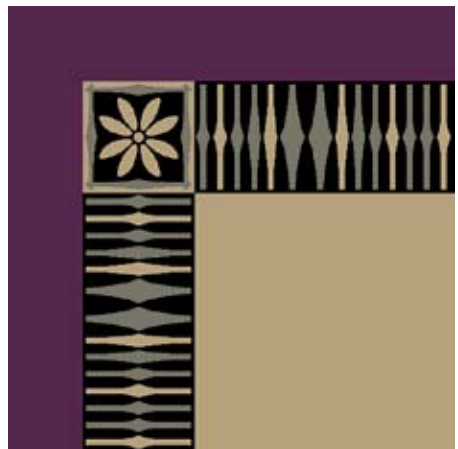
D13292-MW246 3" (L) X 3" (w) SM



D13291-MW246* 12" (L) X 6" (w) SM



D13301-MW246 18" (L) X 12" (w) Border/Corner



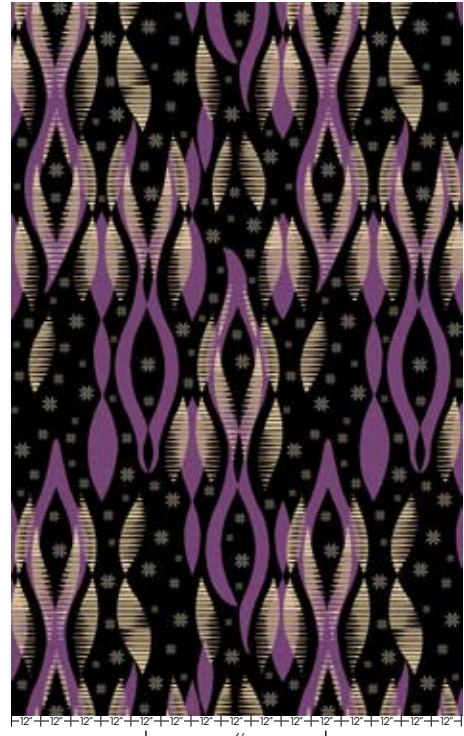
D13300-MW246 9" (L) X 9" (w) Border/Corner

* No multiple breadth installations.



12' 12' 12' 12' 12' 12' 12' 12' 12' 12' 12' 12' 12' 12' 12'

S22187-MW246 18' (L) X 15' (w) Corridor



12' 12' 12' 12' 12' 12' 12' 12' 12' 12' 12' 12' 12' 12' 12'

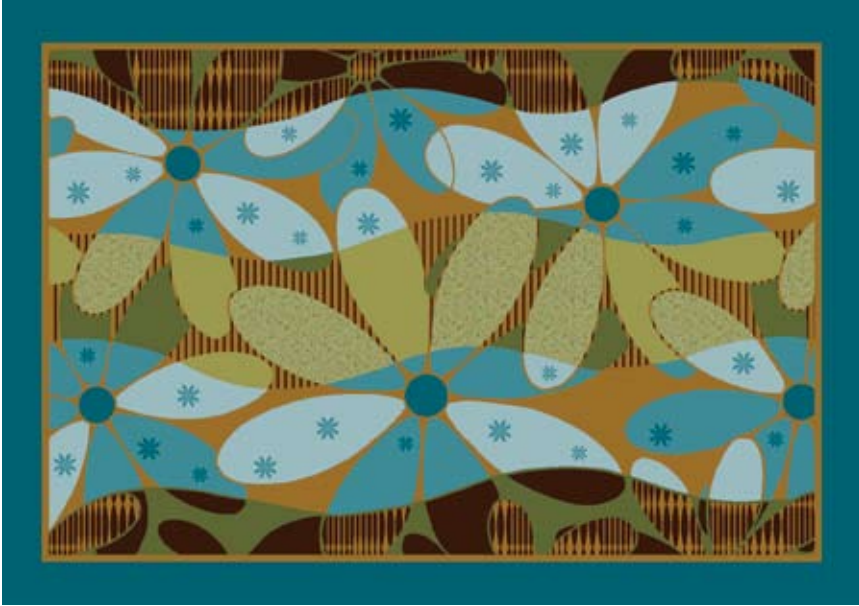
S22186-MW246 18' (L) X 15' (w) Corridor



S22189-MW246 Four Door Rug
S22187-MW246 Corridor



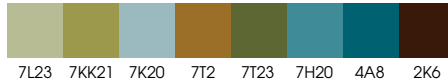
S22189-MW246 Four Door Rug
S22186-MW246 Corridor



S22189-QSP04
S22188-QSP04

9' (L) X 6' (w) Four Door Rug
8' (L) X 5' (w) Four Door Rug

QSP04 PALETTE



S22189-QSP06
S22188-QSP06

9' (L) X 6' (w) Four Door Rug
8' (L) X 5' (w) Four Door Rug

QSP06 PALETTE

