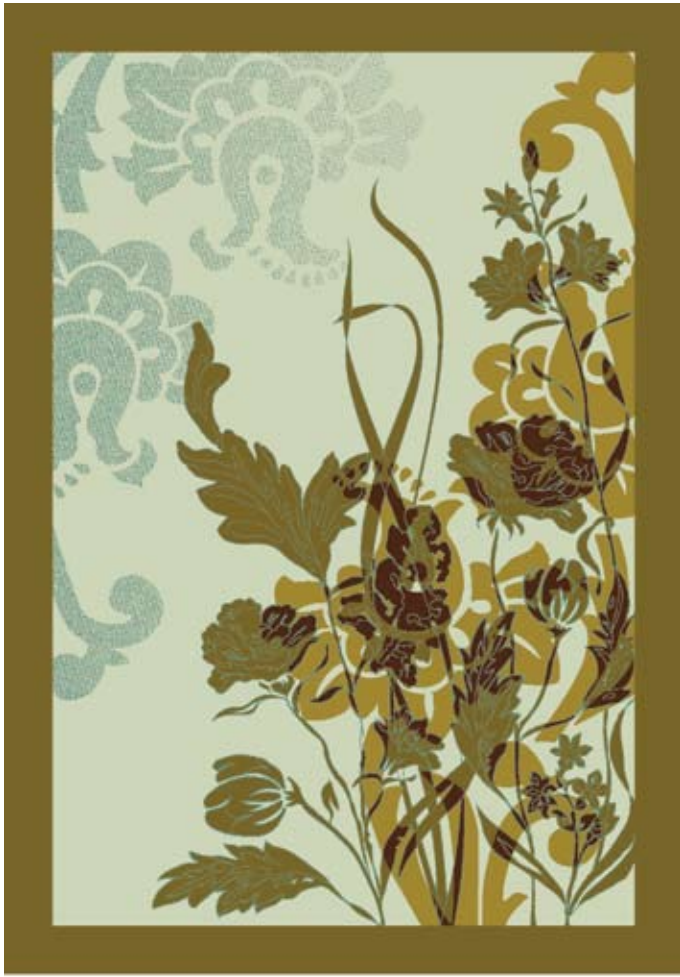
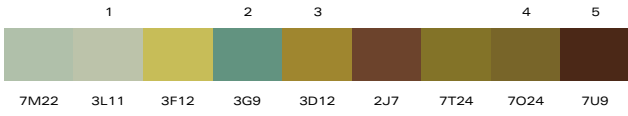


Lexia

by Amy Jaekel



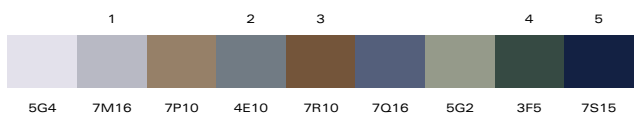
S20927-MW140

9'(L) X 6'(w) Four Door Rug



S20927-MW139

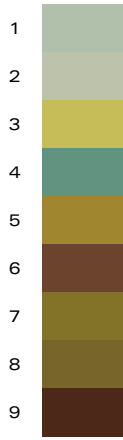
9'(L) X 6'(w) Four Door Rug





S20880-MW140

54"(L) X 54"(w) Medallion



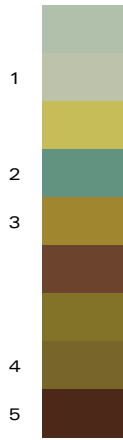
D12346-MW140

36"(L) X 36"(w) SM



S20876-MW140

54"(L) X 54"(w) Medallion



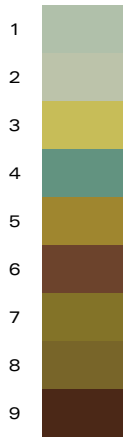
D12345-MW140

36"(L) X 36"(w) SM



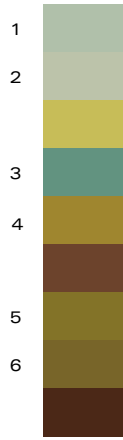
S20879-MW140

72"(L) X 72"(w) SM



D12344-MW140

36"(L) X 36"(w) SM



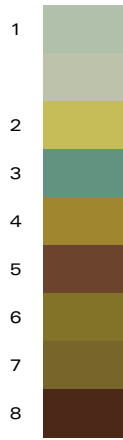
D12343-MW140

36"(L) X 36"(w) SM



D12342-MW140

12"(L) X 12"(w) SM



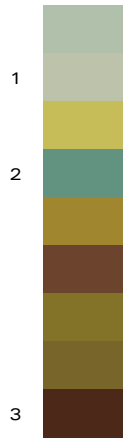
D12347-MW140

36"(L) X 36"(w) SM



D12348-MW140

36"(L) X 36"(w) SM



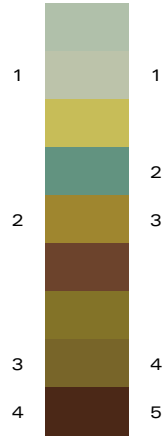
D12341-MW140

18"(L) X 18"(w) SM



D12362-MW140

12"(L) X 12"(w) SM



S20878-MW140

9'(L) X 6'(w) Four Door Rug



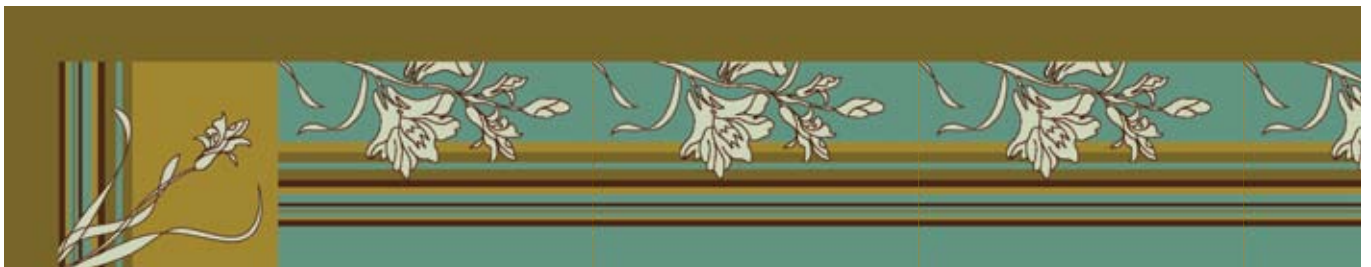
S20877-MW140

9'(L) X 6'(w) Four Door Rug



D12349-MW140

36"(L) X 36"(w) Design Border/Corner



D12350-MW140

36"(L) X 24"(w) Design Border/Corner

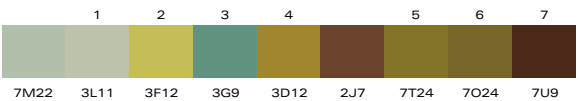




The LEXIA Collection designed by Amy Jaekel, is a fresh interpretation of classic damask paired with a wispy etched floral overlay. With options ranging from organic to bold, and modern elements such as stripes used in combination with soft layers, Lexia is a transitional collection that creates a unique feel for each space and will work anywhere.



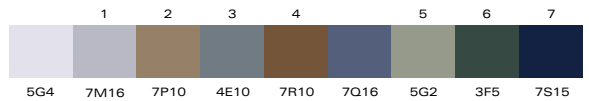
S20928-MW140 144"(L) X 60"(w) Corridor



7M22 3L11 3F12 3G9 3D12 2J7 7T24 7O24 7U9



S20928-MW139 144"(L) X 60"(w) Corridor



5G4 7M16 7P10 4E10 7R10 7Q16 5G2 3F5 7S15

SPECIFY FOR A CURE™
Benefiting Susan G. Komen
for the Cure

©2008 DURKAN, A DIVISION OF THE MOHAWK GROUP

405 Virgil Drive
Dalton, GA 30721
800.241.4580
www.durkan.com

LEXIA SLT0002401