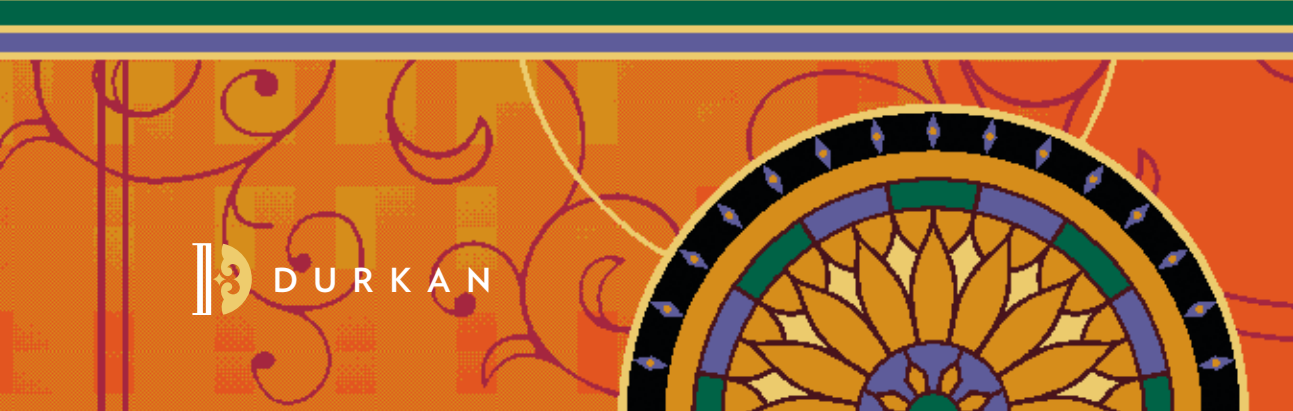


# MERIDIAN

A COLLECTION BY BRIAN McCLESKEY





**S22610-QSP02**  
9' (L) X 6' (w) Four Door Rug



**S22609-QSP02**  
8' (L) X 5' (w) Four Door Rug

**QSP02 PALETTE**



7N2    7R2    7P17    7E1    7C5    7E16    7D15    7C23    7V13

Some patterns in this collection are ideally suited for Synthesis base grades.



S22608-QSP02 60" (L) X 60" (w) Medallion



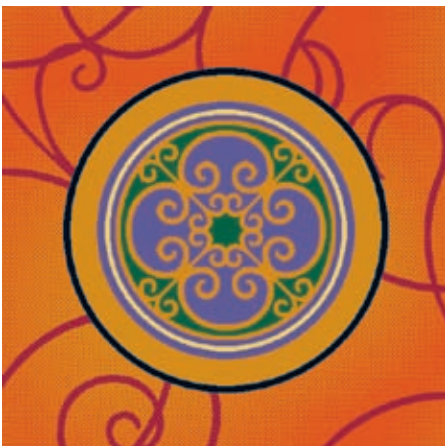
D13579-QSP02 18" (L) X 18" (w) SM



D13535-QSP02 48" (L) X 48" (w) HD



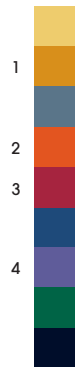
D13578-QSP02 12" (L) X 12" (w) SM



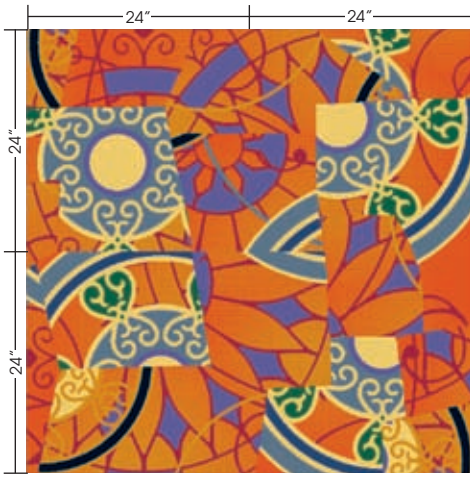
D13580-QSP02 36" (L) X 36" (w) HD



D13577-QSP02 6" (L) X 6" (w) SM



D13576-QSP02 6" (L) X 6" (w) SM



CT13581-QSP02

Carpet Tile



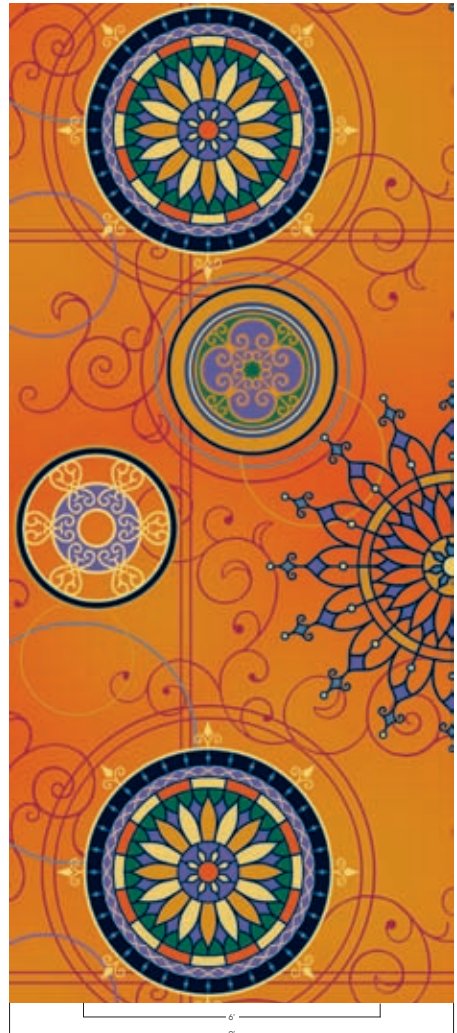
D13582-QSP02

36" (L) X 18" (w) Border/Corner



S22606-QSP02

15' (L) X 9' (w) Corridor  
Area Shown: 30' (L) X 9' (w)



S22604-QSP02

15' (L) X 9' (w) Corridor  
Area Shown: 30' (L) X 9' (w)



Illustration utilizing S22610 Rug and S22606 Corridor in typical corridor application.



Illustration utilizing S22609 Rug and S22604 Corridor in typical corridor application.



**D13535-QSP01**

36" (L) X 36" (w) SM

**QSP01 PALETTE**



7L3 7N3 7E3 7R5 4K6 7T17 7P22 7V22 7V13



**D13535-QSP05**

36" (L) X 36" (w) SM

**QSP05 PALETTE**



3F12 7KK2 3E12 7KK3 7KK4 7T7 3B4 7W16 7S24



**D13535-QSP04**

36" (L) X 36" (w) SM

**QSP04 PALETTE**



2C1 7L23 7K20 7KK21 7T23 7H20 4AB 7T2 2K6



**D13535-QSP06**

36" (L) X 36" (w) SM

**QSP06 PALETTE**



7W1 5B1 7L3 7T11 5I2 7W9 5H2 7T10 5G1

Some patterns in this collection are ideally suited for Synthesis base grades.



405 Virgil Drive | Dalton, GA 30721  
800-241-4580 www.durkan.com



The Mohawk Group  
MERID SLT0002840