

Serenity

by

VIRGINIA LANGLEY



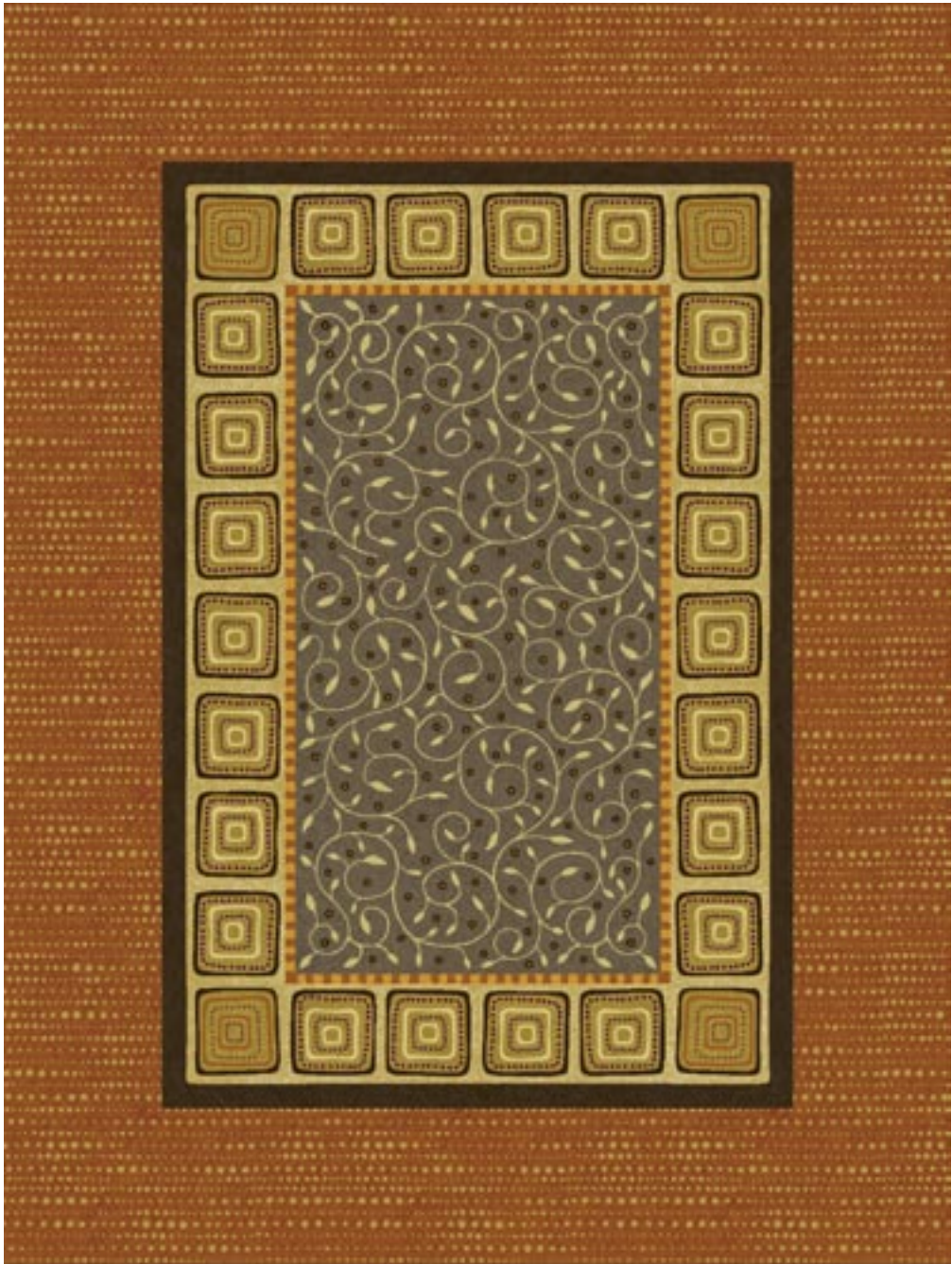
DURKAN
HOSPITALITY



VIRGINIA
LANGLEY

Serenity is a blend of naturalistic essences that flow with a freehand finish, giving the designs a casual and serene appearance. There is a hint of tribal influences that are neutralized and stylized into a transitional theme, with modern sophistication and refinement. The patterns carry flavors of far away places and have a subtle hint of the exotic.

These combinations of the old and the new display a revival in artistic expression with a contemporary relevance and appeal for a variety of hospitality settings.

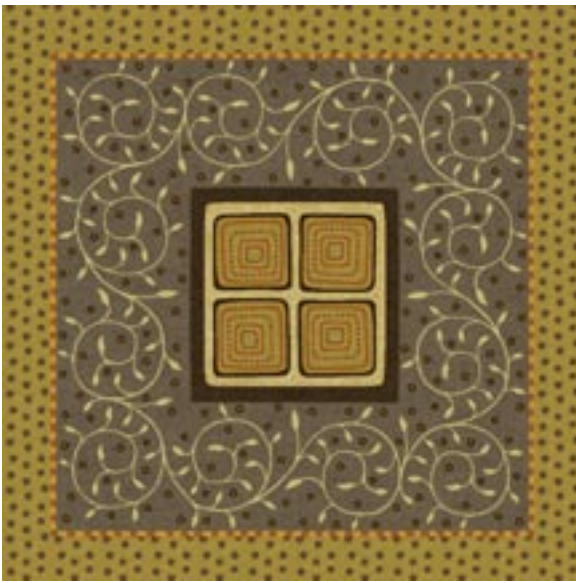


VL10941-MW120

Rug Size: 9'(L) X 6'(w)
Area Shown: 12'(L) X 9'(w)



1 7L3 2 7M24 3 7N24 4 2C2 5 7N23 6 5L12 7 7T7 8 7C2 9 7KK12 10 3A5 11 7U11 12 7KK17



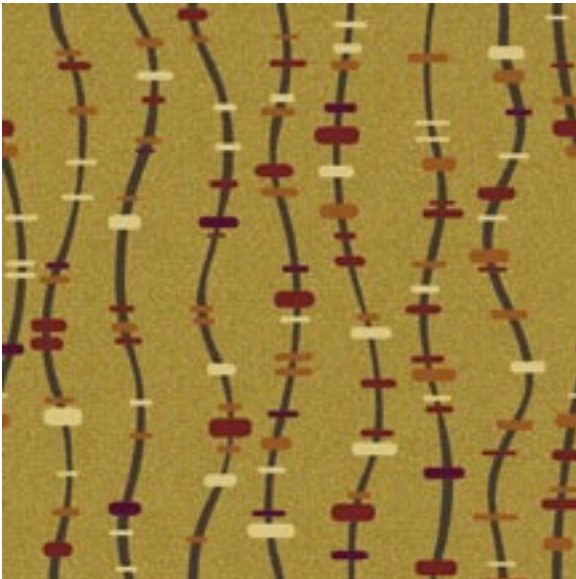
VL10942-MW120

Rug Size: 60"(L) X 60"(w)
Area Shown: 72"(L) X 72"(w)



VL11348-MW120

24"(L) X 24"(w) SM



VL10939-MW120

72"(L) X 72"(w) SM



VL11349-MW120

36"(L) X 36"(w) HD



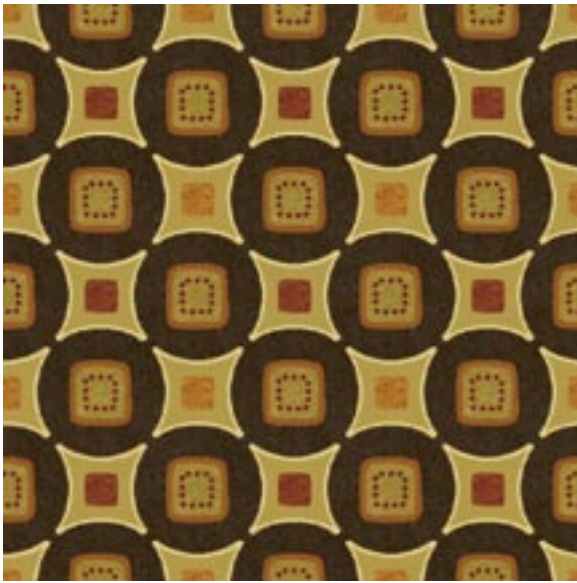
VL11344-MW120

48"(L) X 48"(w) SM



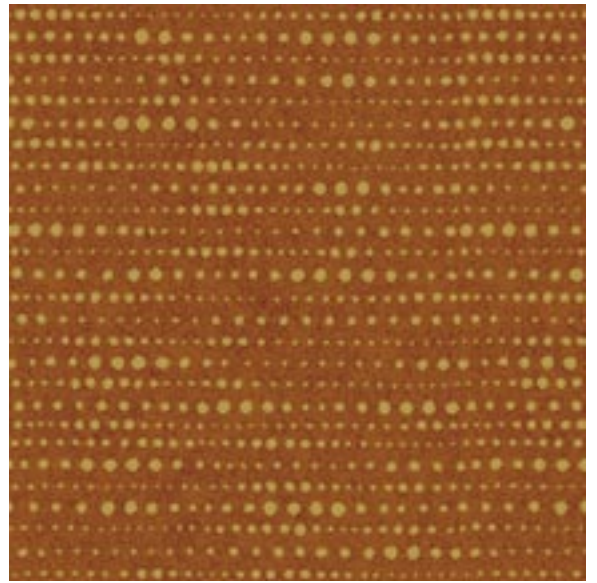
VL11347-MW120

18"(L) X 24"(w) SM



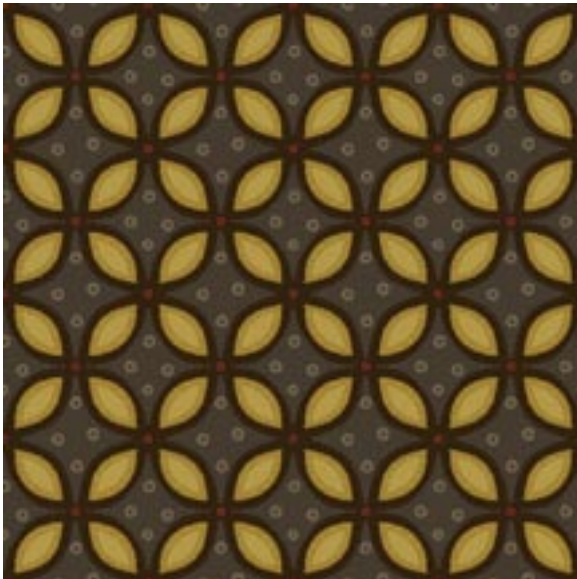
VL11346-MW120

12"(L) X 12"(w) SM



VL11350-MW120*

36"(L) X 36"(w) SM



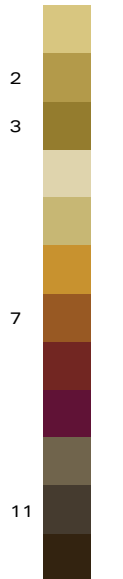
VL11345-MW120

9"(L) X 9"(w) SM



VL11355-MW120

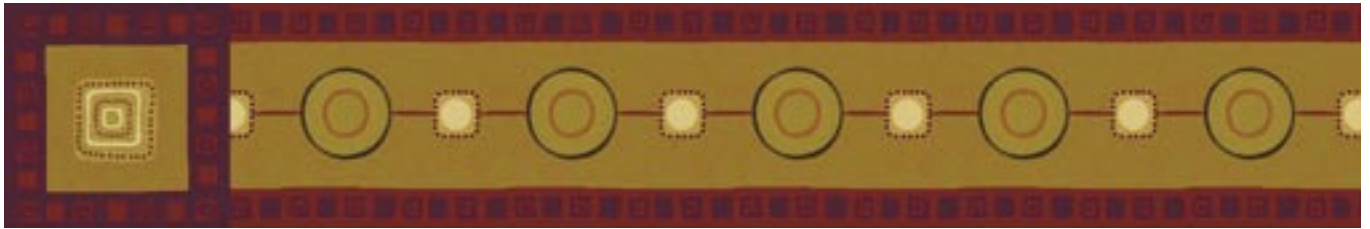
72"(L) X 72"(w) Corridor Runner
Area Shown: 12'(L) X 6'(w)



VL10940-MW120

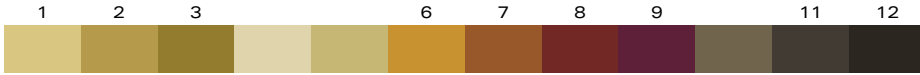
6"(L) X 6"(w) SM

* These patterns are to be used as bleedout or fill patterns only.



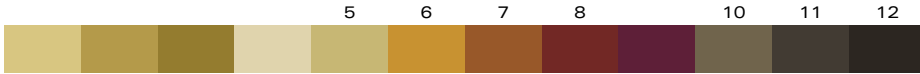
VL11351-MW120

24"(L) X 24"(w) Design Border/Corner



VL11352-MW120

36"(L) X 18"(w) Design Border/Corner



VL11353-MW120

18"(L) X 12"(w) Design Border/Corner



VL11354-MW120

24"(L) X 9"(w) Design Border/Corner





DURKAN
HOSPITALITY

405 Virgil Drive
Dalton, GA 30721
800.241.4580
706.428.8164 FAX
www.durkan.com

SPECIFY  FOR A CURE[®]

Benefiting the Susan G. Komen
Breast Cancer Foundation

*This collection may also be
available in
CYP construction.
Please contact your local
Durkan representative.*

Serenity
A Virginia Langley Collection



MW121



1 5J12 2 5K12 3 7Q5 4 7M5 5 2C2 6 4L7 7 4J7 8 7F14 9 7C14 10 3B1 11 3B2 12 5A11